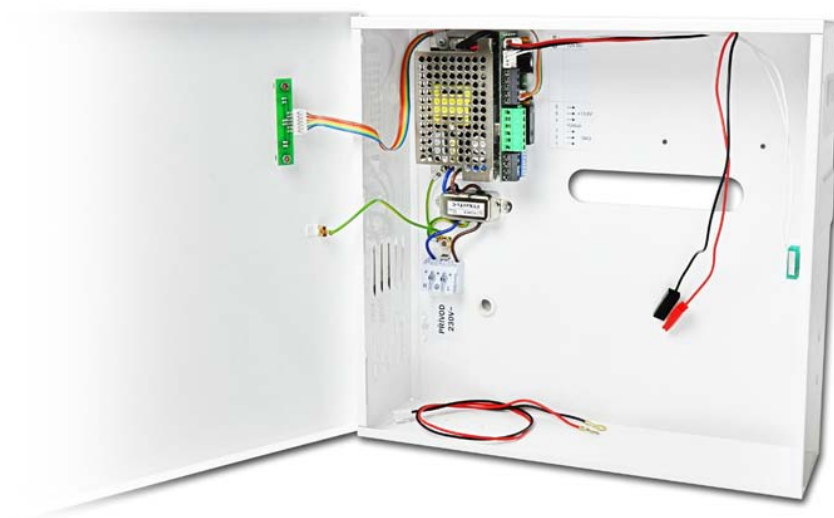


POW-3A – THE NEW POWER SUPPLY

Features

- Supply voltage 230 VAC
- Output 13,8 VDC or 24 VDC
- Signalling on the front panel
- Optional remote control
- 2 output circuits permanent/detachable
- Overcharge protection
- Short circuit protection
- Automatic battery recharge
- Contact for protection against sabotage
- Input for EPS
- Easy mounting of multiple terminal

POW-3A is a new generation universal switching power supply. Is designed particularly to supply ACS-line system components. The internal back-up battery (order separately) keeps the system operation uninterrupted in case of power failure. The POW-3A Power Supply provides automatic battery charging and monitoring of conditions to achieve the maximum service life. The cover is equipped by a standoff for wall-mounting (8 mm). This power supply offers many optional possibilities like diagnostics, operating status remote monitoring (overcharge, low battery), remote control. Possibility of remote control or connection to the EPS. Free space for DH485 converter, or module AL20.



Product Code	Description
POW12-3	Smart power supply 12V/3A with possibility of backup
TP1270	Maintenance-free battery 12V, 7 Ah
TP12180	Maintenance-free battery 12V, 18 Ah
PG7, PG13,5	Cable bushing, 7 mm or 13,5 mm diameter
ZAMEK2	Mechanical multi-plate lock for closure power-supply unit (replaces cover screws)
ZAMEK3	The electric lock with source disconnecting contact (not used to close the cover)

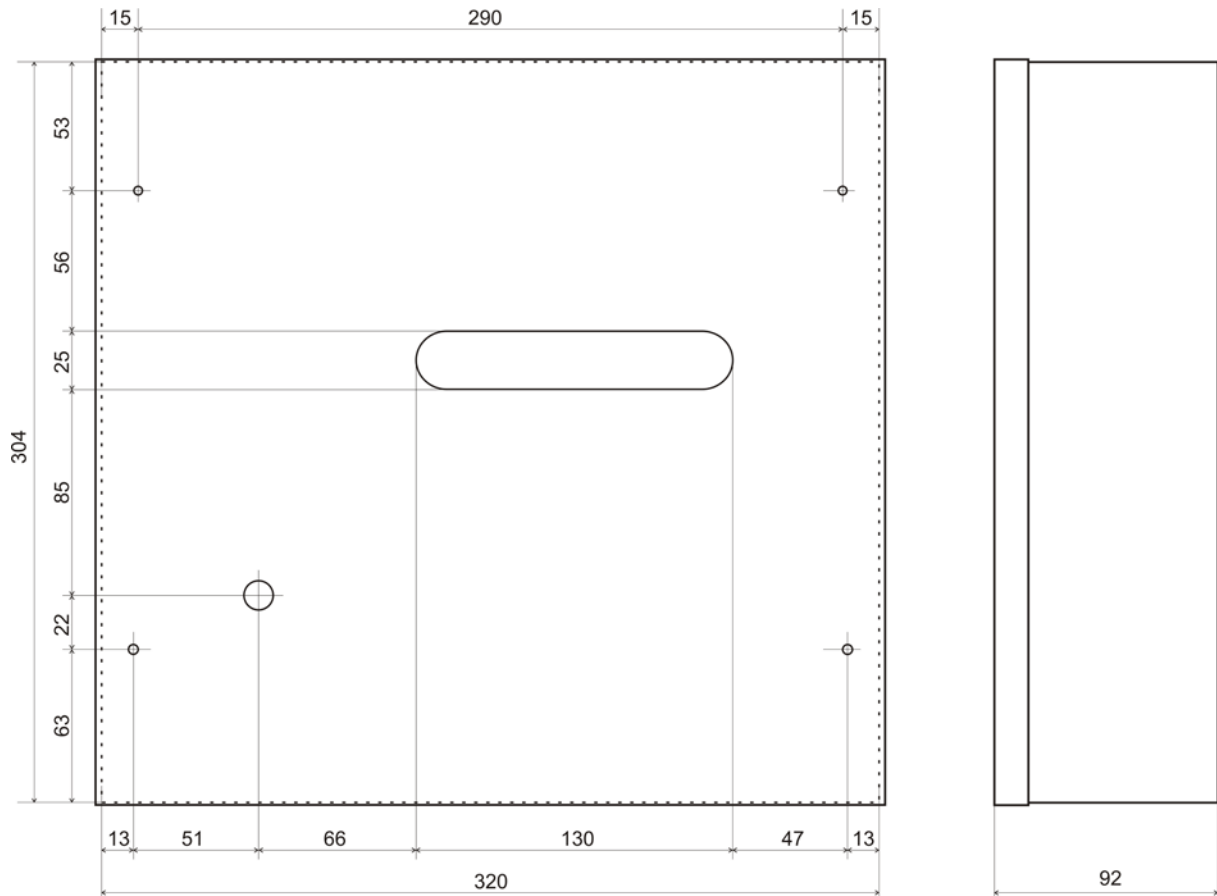
Optional accessories:



**ELECTRONIC
IDENTIFICATION
SYSTEM**

ESTELAR s. r. o., Palackého 744/1, 769 01 Holešov, Czech Republic
phone: +420 573 394 894, e-mail: sales@estelar.eu, www.estelar.eu
www.acsline.com

TECHNICAL DATA



Type	POW12-3
Voltage range	90 - 264 VAC
Consumption	58 VA at full workload
Frequency range	47-63 Hz
AC current	1,6A/115 VAC 1A/230 VAC
Efficiency	Switched/ 84%
Overvoltage protection	yes - automatic operation restore
Short-circuit protection in output/overload	yes - automatic operation restore
Output voltage	13,8 VDC (toleration: ± 1 %, zvlnění: 120 mV)
- optional (additional charge)	Voltage output 24 V
Output current	3 A (4,5 A including recharge)
- optional (additional charge)	Up to 5 A/12 V
Battery charging voltage	13,8 V
Battery charging current	Independent output 1,5 A max.
Cover	IP30, metal box - white
Measurements (LxWxH) including door	325 x 92 x 307 mm
Space for battery	max. 20 Ah/12 V (7 Ah/12 V)
Weight (without battery)	3,9 kg
Operating temperature	-20 °C - +70 °C
Storage temperature	-20 °C - +85 °C
Relative operation humidity	20 - 90% RH not condensing
The device is intended for inside use in according to ČSN 357107 a EN 60439-1.	